

Connecting systems

for modern prefab walls

Certainly a great connection.



 knapp-connectors.com/prefabwalls

KNAPP[®]
connectors.com



Friedrich Knapp
Company founder

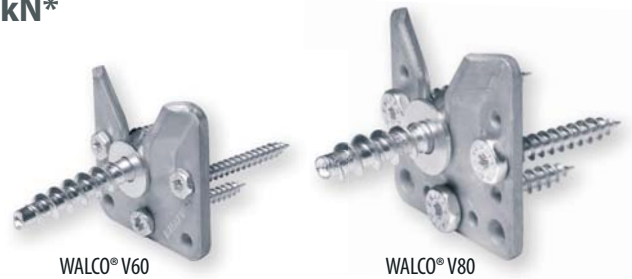
Welcome to the World of KNAPP®!

As a producer of patented connecting systems we develop and produce high-quality products which are distributed worldwide. Not only will our connecting systems convince – but also inspire you with the wide range of applications. The comprehensive service offers you the possibility to find the best, the most efficient and innovative solution for the realisation of your products. On the following pages you will find our connector systems for modern prefab walls. Every connector permits high prefabrication and possesses the CE- and Ü-Marking through European and German certification of standards. Regular external inspection guarantees maximum security for planners, architects, manufacturers and owners.

WALCO® V | The connector for prefab wall up to 14 kN*

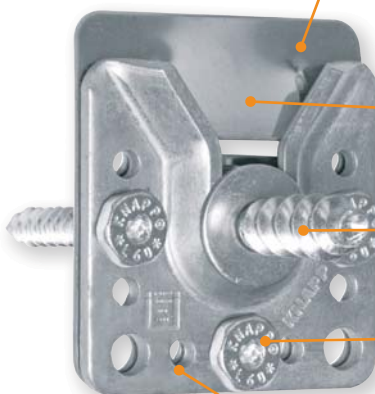
System advantages:

- Universal connection to wood materials, steel and concrete
- For timber width from 80 mm upwards
- No milling in thicknesses 13 / 15 mm necessary
- Fast and accurate on-site assembly - prefabricated walls are assembled without screw on-site
- Particularly easy retraction of the locking screw by generously shaped receiving hopper (V system)
- Screw collar and collar bolts are screwed directly in the component with or without interlayer
- Hang on end walls and connected subsequently to partitioning
- Setting joint intervals e.g. for seals and readjustment of building tolerances
- Stable from the first wall-corner on



WALCO® V60

WALCO® V80



The clip lock, made from stainless spring steel, locks the connection against slide-in direction and supports the starting power Z_A from one wall unit to the other.

The V-shape fork catches the holding screw and lines them in exact position.

The WALCO® V holding screw is the counter part to the connector. It comes in four different versions.

3-5 pcs. WALCO® V hex-head wood screws 6x50 mm.

WALCO® V is made of premium quality steel, is hot-dip galvanized and produced in Germany.



Installation example:
Mounted on the wall with double-sided element seals.



Installation example:
Mounted on the wall element.



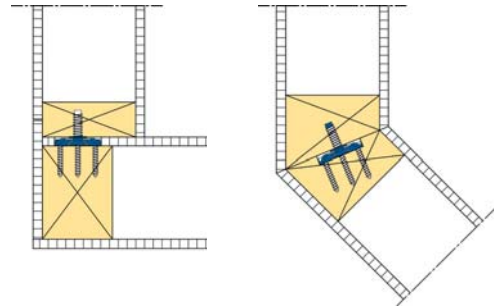
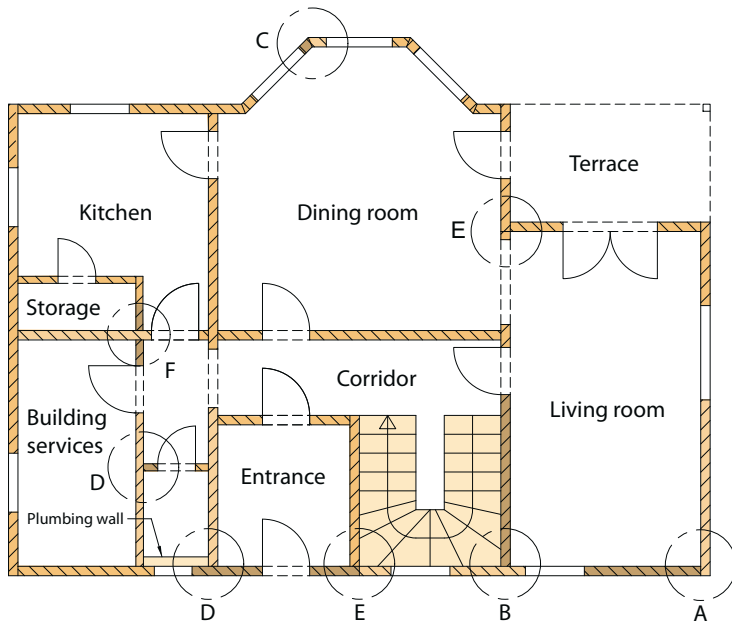
Construction of bathouses for the holiday water world „Im Jaich“ on the isle of Rügen (Germany)

More information:
www.knapp-connectors.com/walcov

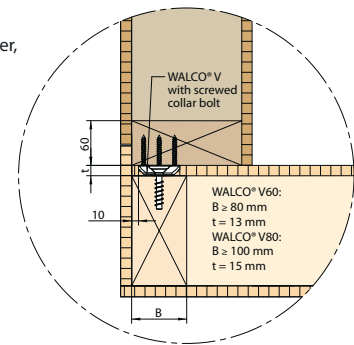
*Design values $F_{2,Rd}$ in the insertion direction ($k_{mod} = 0,9$, GL24h) apply only to the use of original KNAPP® CS-screws according to ETA 10/0189. Values of the German construction licensing system is slightly different and are available on request.

WALCO® V60 / V80

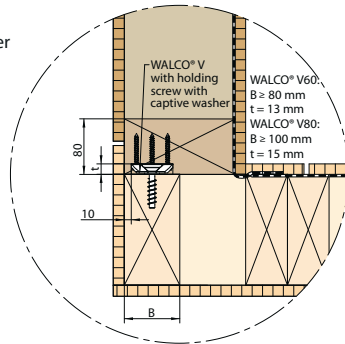
Application examples and connection details



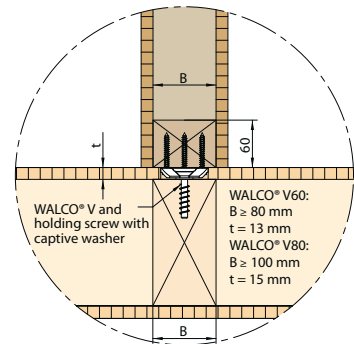
Detail A:
External wall corner,
planked with
wood-based
panel



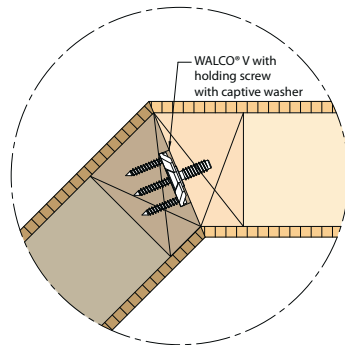
Detail A:
External wall corner
with vapor barrier
(PE-Im)



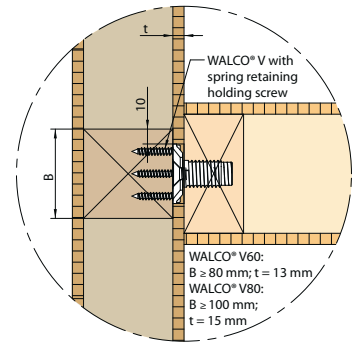
Detail B:
External wall
connection
Internal wall
connection



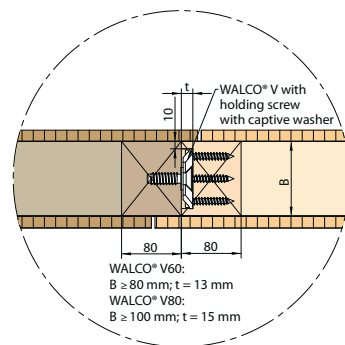
Detail C:
External wall
mitre corner



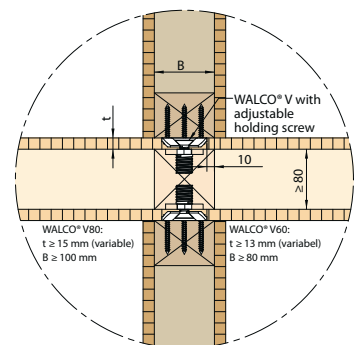
Detail D:
Internal wall
connection (e. g.
plumbing wall)



Detail E:
External wall
straight joint
Internal wall
straight joint



Detail F:
Internal wall
crossing



WALCO® V60 / V80

Load capacity

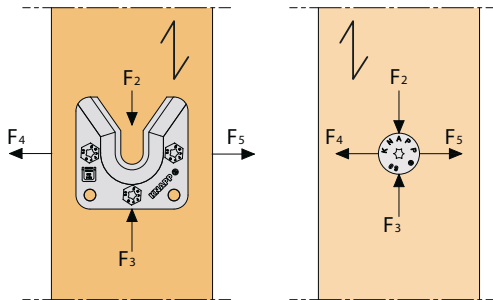
Connector	Wood material	Design values $F_{2,Rd}$ [kN]			Design values $F_{3,Rd}$ [kN]			Design values $F_{45,Rd}$ [kN]		
		k_{mod} [Nutzungsklasse 1+2]			k_{mod} [Nutzungsklasse 1+2]			k_{mod} [Nutzungsklasse 1+2]		
		0,6	0,8	0,9	0,6	0,8	0,9	0,6	0,8	0,9
WALCO® V60	C24	2,74	3,66	4,11	2,74	3,66	4,00	1,79	2,39	2,69
	GL 24h	2,98	3,97	4,46	2,98	3,97	4,00	1,95	2,59	2,92
	GL 32h	3,37	4,49	5,05	3,37	4,00	4,00	2,20	2,94	3,30
WALCO® V80	C24	3,28	4,37	4,91	3,28	4,00	4,00	2,06	2,75	3,09
	GL 24h	3,56	4,74	5,33	3,56	4,00	4,00	2,24	2,98	3,36
	GL 32h	4,02	5,37	6,04	4,00	4,00	4,00	2,53	3,37	3,80

$F_{2,Rd}$ Design values in direction of insertion
 $F_{3,Rd}$ Design values against the direction of insertion
 $F_{45,Rd}$ Design values perpendicular to the direction of insertion

k_{mod} Modification factors for duration of load and moisture content
 $k_{mod} = 0,6 \Rightarrow$ Permanent (more than 10 years for example self weight)
 $k_{mod} = 0,8 \Rightarrow$ Medium term (1 week - 6 months for example imposed floor load, snow load)
 $k_{mod} = 0,9 \Rightarrow$ Short term (shorter than one week, for example snow- and wind load)

ETA

Additional load values are given in our ETA STATICS FOLDER and can be downloaded as registered user from: www.knapp-connectors.com/download.



Characteristic values, permissible load values and design values refer to wood material and direction of stress.

Practical examples

The values listed below are given as samples and valid for Germany only! The following table gives you recommendations regarding the wall length B in addition to the wind load w_d and also the number of installed connectors. The wind load $w_d = 0,6 \text{ kN/m}^2$ to the designed wind load of German midland wind area 1 (impact pressure $q = 0,5 \text{ kN/m}^2$, aerodynamics factor $c_{pe} = 0,8$, $v = 102 \text{ km/h}$). The listed wind loads are referring to the following wind areas:

$w_d = 1,0 \text{ kN/m}^2$ ($q = 0,8 \text{ kN/m}^2$, $c_{pe} = 0,8$, $v = 129 \text{ km/h}$)

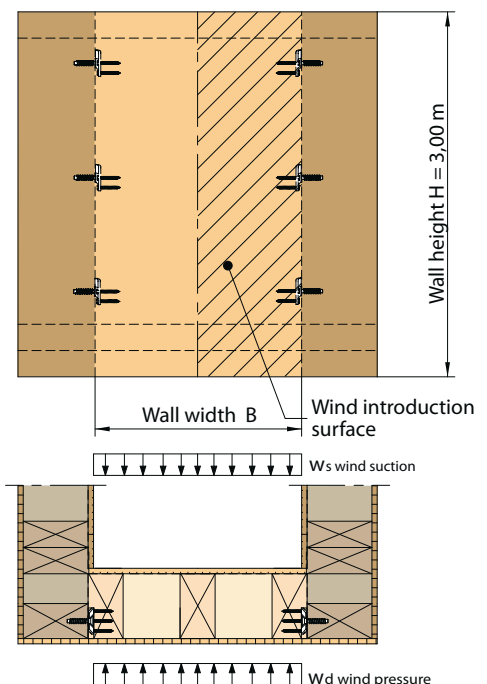
$w_d = 1,5 \text{ kN/m}^2$ ($q = 1,25 \text{ kN/m}^2$, $c_{pe} = 0,8$, $v = 160 \text{ km/h}$)

$w_d = 1,9 \text{ kN/m}^2$ ($q = 1,55 \text{ kN/m}^2$, $c_{pe} = 0,8$, $v = 179 \text{ km/h}$) $18 \text{ m} < H \leq 25 \text{ m}$

Derivation: $w_d = \gamma_Q \cdot c_{pe} \cdot q = \gamma_Q = 1,5$

Table 1: Wall width B in dependence of the number of connectors and wind load.
 We recommend min. 3 WALCO® V connectors for external wall corner.

Qty/joint	Connector	Max. length of wall B [m]			
		Designed wind load [kN/m ²]			
		$w_d = 0,6$	$w_d = 1,0$	$w_d = 1,5$	$w_d = 1,9$
3	WALCO® V60 KS	9,0	5,4	3,6	2,8
4		12,0	7,2	4,8	3,8
5		14,9	9,0	6,0	4,7
3	WALCO® V80 KS	10,3	6,2	4,1	3,3
4		13,7	8,2	5,5	4,3
5		17,2	10,3	6,9	5,4



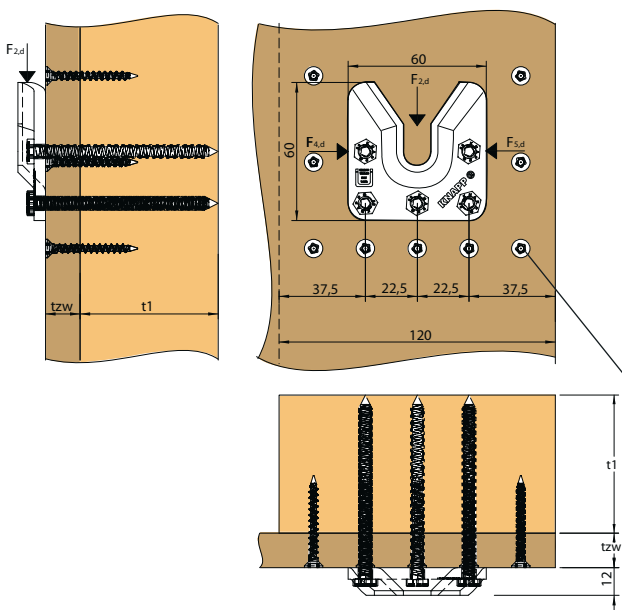
The graph shows the load directions and installation. Design values given in the table below should be used for structural analysis according to EC5 (EN1995-1-1).

WALCO® V60 / V80

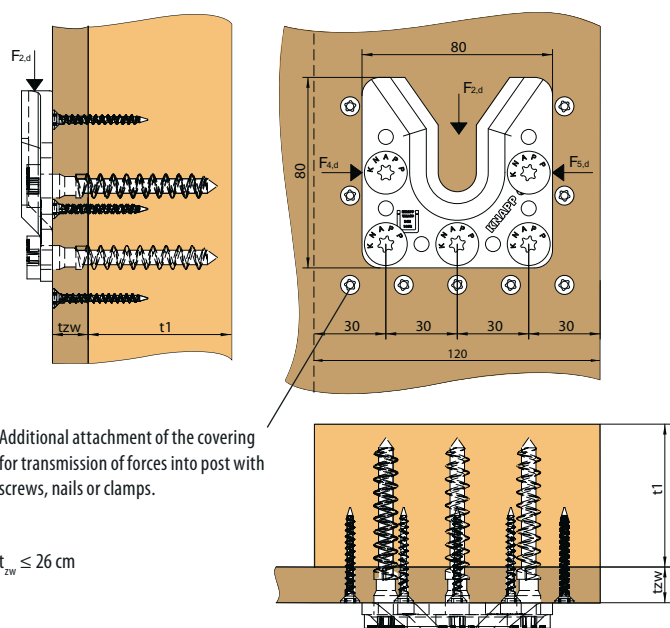
Permissible load values with interlayer

Thickness t_{zw} [mm]	Interlayer/ Stud	WALCO® V60 5 screws 6x80 1 screw 12x60				WALCO® V80 3 screws 10x80 1 screw 16x60			
		Design values of load-bearing capacity F_{Rd} [kN]				Design values of load-bearing capacity F_{Rd} [kN]			
		$F_{2,Rd}$ [[permanent]	$F_{2,Rd}$ [medium]	$F_{2,Rd}$ [short]	$F_{45,Rd}$ [short]	$F_{2,Rd}$ [[permanent]	$F_{2,Rd}$ [medium]	$F_{2,Rd}$ [short]	$F_{45,Rd}$ [short]
12	Plasterboard / C24	1,4	2,8	3,4	2,7	2,1	4,2	4,9	3,1
15		1,5	3,0	3,7		2,3	4,4		
12	OSB Plate / C24	2,4	3,7	4,1	2,7	2,8	4,4	4,9	3,1
15		2,2	3,7	4,1		2,8	4,4		
13	Particleboard / C24	1,9	3,3	4,0	2,7	2,3	3,9	4,8	3,1
19		1,8	3,1	3,8		2,3	4,0		
13	Sheetrock / C24	2,7	3,7	4,1	2,7	3,3	4,4	4,9	3,1
15						3,3	4,4		

WALCO® V60



WALCO® V80



ETA

Additional attachment of the covering for transmission of forces into post with screws, nails or clamps.

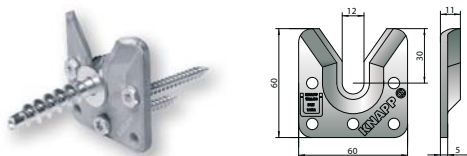
$t_{zw} \leq 26$ cm

WALCO® V directly to intermediate layer (cladding) attached:

When screwing the WALCO® V connector directly to an intermediate layer, the design values listed below come into force, these relate to the Construction Licensing ETA-10/0189 and on the DIN 1995-1-1 (2010-12). The values in the different load duration classes and the action directions are divided. Additionally, note that the interlayer force-fits with screws, nails or staples is fastened with a wooden stand (see picture above: auxiliary screwed).

WALCO® V60 incl. holding screw and hex-head wood screws

Art.-Nr. KS: K102 / EH: K104 / GH: K106 / VK: K108

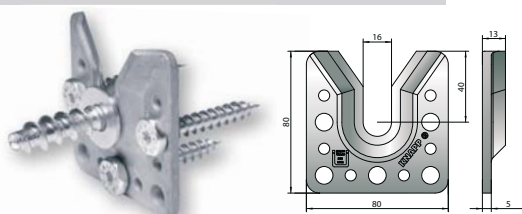


Holding screw wall 1	Screwing wall 2	Charact. values [C24]		
		$F_{2,Rk}$ [kN]	$F_{45,Rk}$ [kN]	$F_{1,Rk}$ [kN]
KS 12x60	3 pcs. 6x50	5,9	3,9	6,5
EH M12	3 pcs. 6x50	5,1	3,0	4,7
VK D12	3 pcs. 6x50	3,9	3,9	3,9
GH M12	3 pcs. 6x50	6,5	4,3	6,9

Minimum timber cross section: $W \times D = 80 \times 60$ mm

WALCO® V80 incl. holding screws and hex-head wood screws

Art.-Nr. KS: K103 / EH: K105 / GH: K107 / VK: K109



Holding screw wall 1	Screwing wall 2	Charact. values [C24]		
		$F_{2,Rk}$ [kN]	$F_{45,Rk}$ [kN]	$F_{1,Rk}$ [kN]
KS 16x60	3 pcs. 10x60	7,1	4,5	7,1
EH M16	3 pcs. 10x60	6,7	3,9	6,4
VK D16	3 pcs. 10x60	5,9	5,1	6,5
GH M16	3 pcs. 10x60	13,7	7,2	14,1

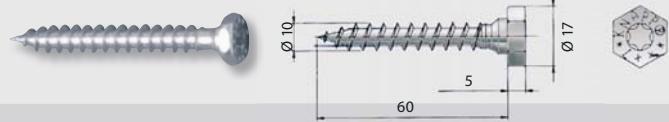
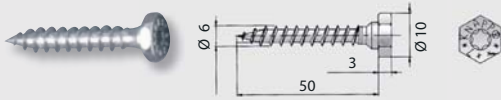
Minimum timber cross section: $W \times D = 100 \times 60$ mm

WALCO® V60 / V80

WALCO® V hex-head wood screws

Art.-No. Z550 V60 Hex-head wood screw 6x50

Art.-No. Z551 V80 Hex-head wood screw 10x60



Application: To screw on WALCO® V.

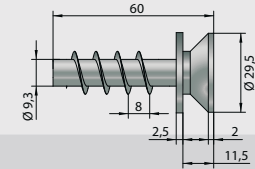
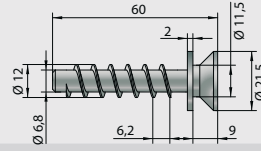
WALCO® V holding screws

WALCO® V60 / V80

Holding screw with captive washer (KS)

Art.-No. Z552 V60 KS 12x60

Art.-No. Z553 V80 KS 16x60

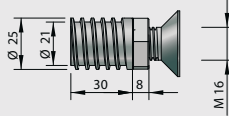
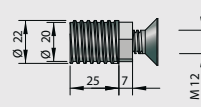


Application: For prefabrication of timber frame walls.

Retaining holding screw (EH)

Art.-No. Z554 V60 EH M12

Art.-No. Z555 V80 EH M16

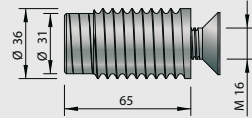
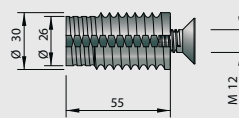


Application: For prefabricated walls in frame constructions and halls.

Retaining spring holding screw (GH)

Art.-No. Z566 V60 GH M12

Art.-No. Z567 V80 GH M16

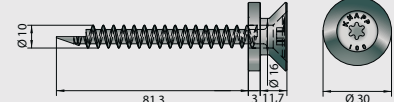
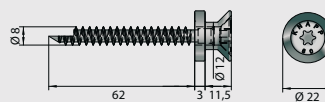


Application: For insertion between two fixed walls (for example installation walls).

Collar bolt holding screw (VK)

Art.-No. Z556 V60 VK D12

Art.-No. Z557 V80 VK D16



Application: For plywood and interlayers, length of the screws as necessary.

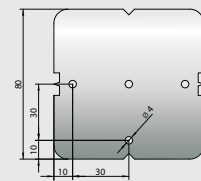
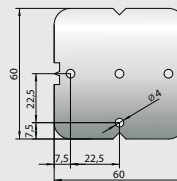
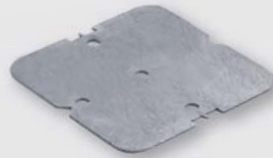
Accessories

WALCO® V drilling-jig (made of steel)

WALCO® V60 / V80

Art.-No. K578 Drilling-jig WALCO® V60

Art.-No. K579 Drilling-jig WALCO® V80

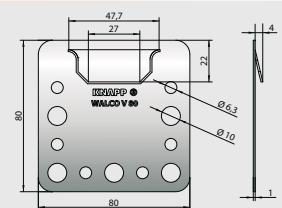
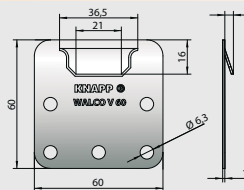


Application: For marking and copying pilot drills connector and holding screws.

WALCO® V clip lock (made of stainless steel)

Art.-No. K112 Clip lock WALCO® V60

Art.-No. K113 Clip lock WALCO® V80



Application: Locks and is loadable counter to the insertion direction, for example tensile forces in the connection of anchor.

WALCO® V PH-screws

Art.-No. Z521 PH-screw 10x80

Art.-No. Z522 PH-screw 10x120

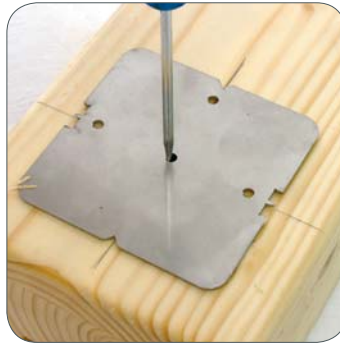
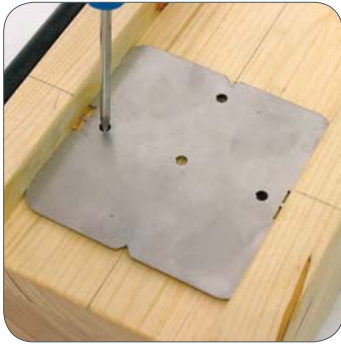


Application: With special solutions, such as planking or oblique gland.

WALCO® V

Installation

- Simple and fast installation with routing machine and optional KNAPP® template.
- Installation with CNC joinery machine possible – all data for the standard CNC joinery machine programmes are included.



Milling dimensions WALCO® V			
	Width	Length	Depth
V60	60 mm	80 mm	13 mm
V80	80 mm	100 mm	15 mm

1) If necessary make milling, mark drilling.

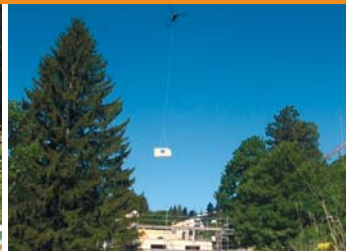
CNC joinery machine



2) Pre-drill screws (see installation instructions).



3) Screw on WALCO® V with the provided screws and retaining screw in counterpart.



Helicopter assembly | House on the Rigi (CH)

Construction manuals, .DXF drawings for WALCO® V-System as well as your personal consultant in your area, please visit: www.knapp-connectors.com/download

Recommended software partners for machine processing:



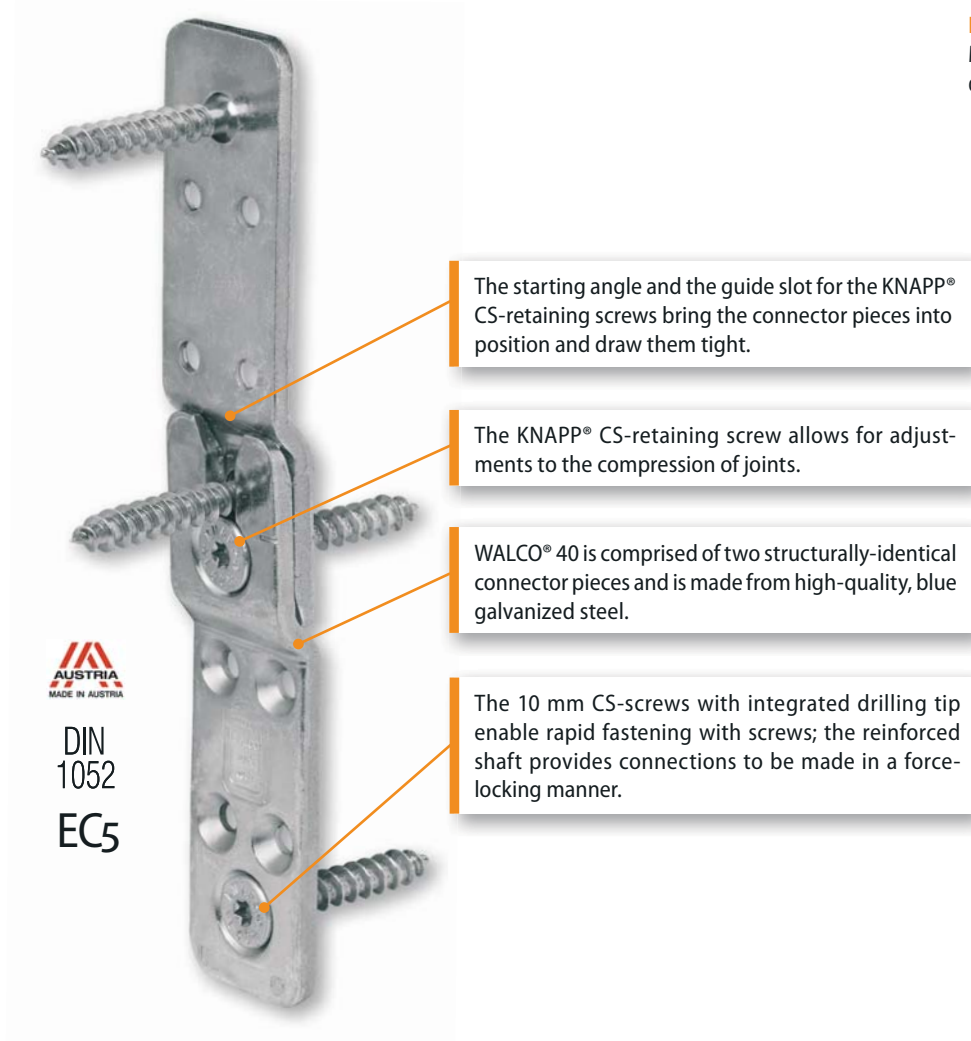
WALCO® 40 | The wall connector for timber frame construction up to 10 kN*

System advantages:

- Efficient wall connectors in timber frame and wood panel
- For timber width from 60 mm up
- For timber according to DIN 1052 and Eurocode 5 (EN 1995-1-1)
- High degree of prefabrication – no screwing on-site
- Plug connection – the wall parts are assembled without screwing
- Self-tightening, stable and invisible – the structure is stable from the first corner on
- Wood frame and plywood board walls frictionally interconnected



Installation example:
Mounted on the wall with double-sided element seals.



Prefabricated houses | Harlesden London (GB) | Starnberg, Bayern (DE)

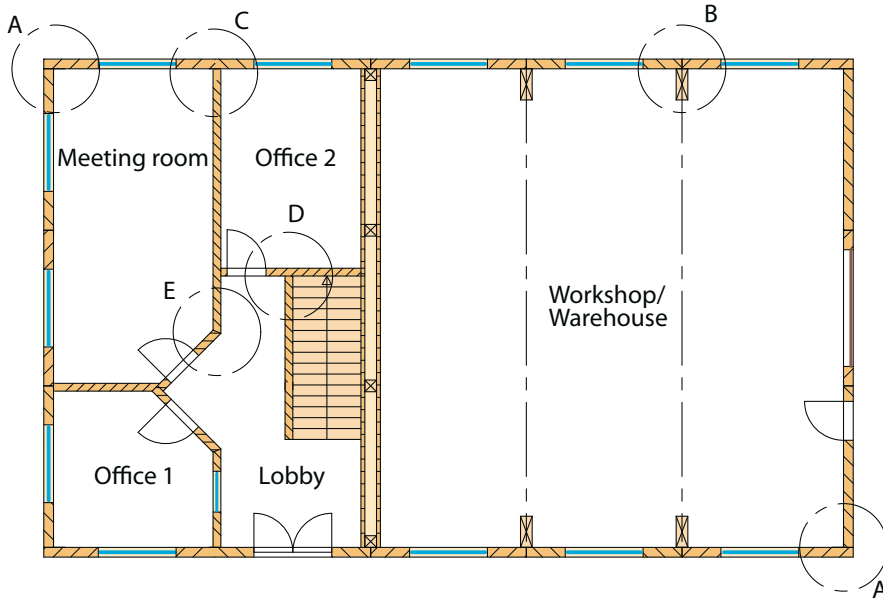
More information:
www.knapp-connectors.com/walco40

*Characteristic values $F_{2,Rk}$ in direction of insertion ($k_{mod} = 0,9$, GL24h) are only valid when using KNAPP® CS-screws and relate to the type of wood under C24 according to EC5. The figures relate to the use of 2 pcs. KNAPP® CS-screws 10x60 mm.

WALCO® 40

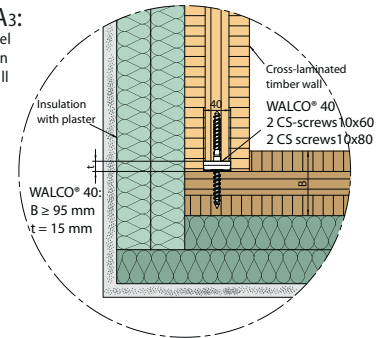
Application examples and connection details

Timber frame construction

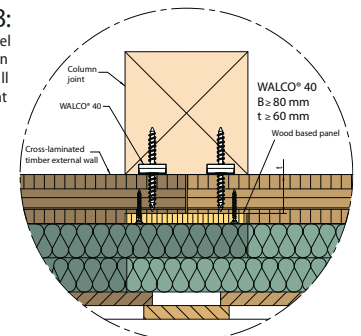


Precast walls with plywood board

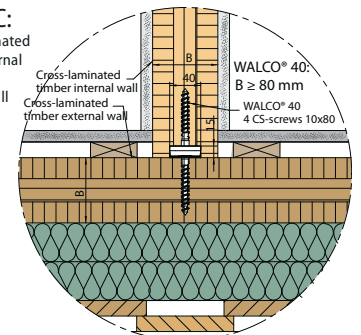
Detail A3:
Timber panel construction external wall corner



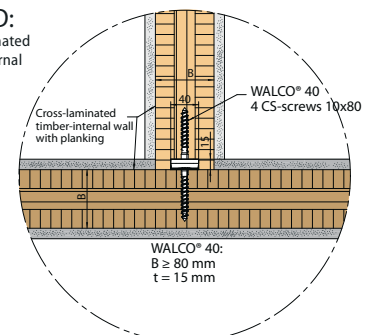
Detail B:
Timber panel construction external wall column joint



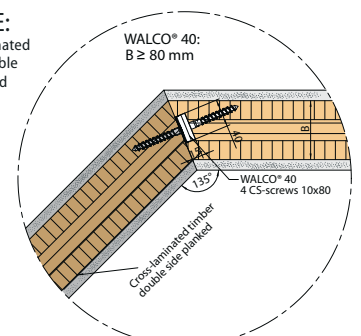
Detail C:
Cross-laminated timber internal wall joint/external wall joint



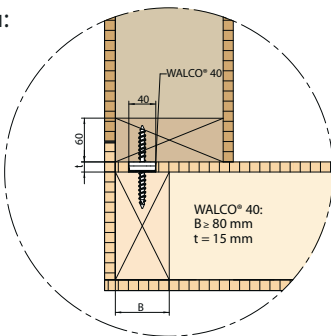
Detail D:
Cross-laminated timber internal wall joint



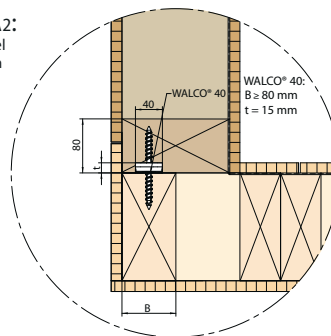
Detail E:
Cross-laminated timber double side planked



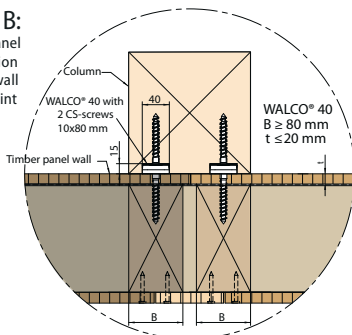
Detail A1:
Timber panel construction external wall corner



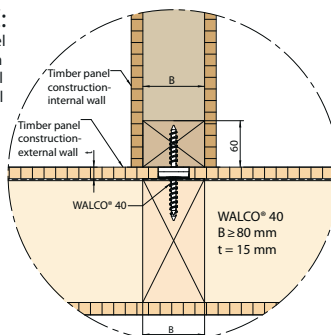
Detail A2:
Timber panel construction external wall corner



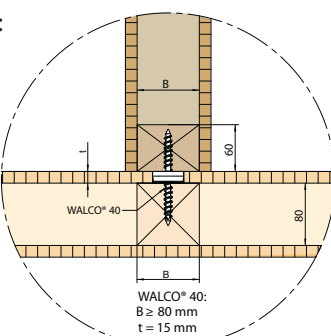
Detail B:
Timber panel construction external wall column joint



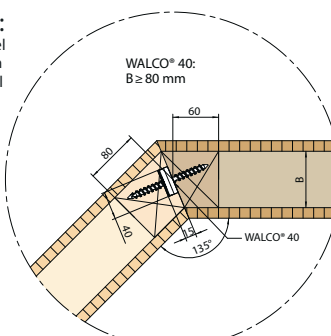
Detail C:
Timber panel construction external wall joint internal wall joint



Detail D:
Timber panel construction internal wall joint



Detail E:
Timber panel construction external wall mitre joint



WALCO® 40

Wall connection system with KNAPP® CS-screws

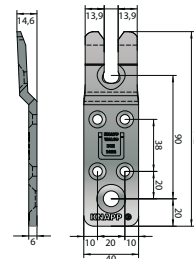
Art.-No. K072



Screwing

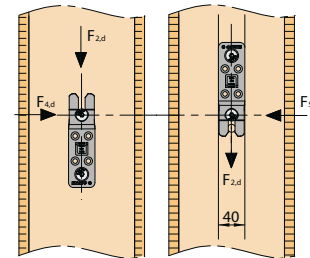
Wall 1	Wall 2
2 pcs. SK 10x60 mm	2 pcs. SK 10x60 mm

Minimum timber cross section: WxD = 60 x 60 mm



Load capacity

Connector	Min. cross section of square timber	Wood material	Charact. values F_{Rk}			Design values of load-bearing capacity F_{Rd} [kN]			
			$F_{2,Rk}$ [kN]	$F_{45,Rk}$ [kN]	$F_{1,Rk}$ [kN]	$F_{2,Rd}$ [$k_{mod}=0,6$]	$F_{2,Rd}$ [$k_{mod}=0,9$]	$F_{45,Rd}$ [$k_{mod}=0,9$]	$F_{1,Rd}$ [$k_{mod}=0,9$]
WALCO® 40 2 pcs./Pair 10x60	Internal wall: 60x60	C24 (S10)	10,0	8,6	10,2	5,5	8,2	7,0	7,1
		GL24h (BS11)	10,3	8,9		5,6	8,4	7,3	
	External wall: 100x60	GL28h (BS14)	10,6	9,1		5,8	8,7	7,4	
		KERTO T	11,1	9,5		6,1	9,1	7,8	



Connector / joint	Max. wall length B [m]			
	Design value for wind load [kN/m ²]			
	$w_d = 0,6$	$w_d = 1,0$	$w_d = 1,5$	$w_d = 1,9$
3	23,5	14,7	9,4	7,6
4	31,3	19,5	12,5	10,1

$F_{2,Rk}$ Characteristic resistance in the insertion direction
 $F_{45,Rk}$ Characteristic resistance perpendicular to the insertion direction
 $F_{1,Rk}$ Characteristic resistance perpendicular to the plane connector (pull load)

$F_{2,Rd}$ Design resistance in the insertion direction
 $F_{45,Rd}$ Design resistance perpendicular to the insertion direction
 $F_{1,Rd}$ Design resistance perpendicular to the connector level (pull load)

k_{mod} Modification factors for duration of load and moisture content 1 and 2
 $k_{mod} = 0,6 \Rightarrow$ Permanent, $k_{mod} = 0,8 \Rightarrow$ Medium term, $k_{mod} = 0,9 \Rightarrow$ Short term

The values of the indexes refer to a wall height of 3 m.
 (Indications about wind loads on page 4)

Design values of the load F_{d} (connection power of dead load, live load, wind and snow), according to DIN 1055-100, the table shows the ratings of load resistance R_d (capacity of the connector) represents the ultimate limit states for Eurocode 5.

KNAPP® CS-screws (WALCO® 40 will supplied with the appropriate CS-screws)

Art.-No. Z519 KNAPP® CS-screw 10x60 with cut-point and reinforced shank

Utilisation: To screw on connector on stud.

Art.-No. Z523 KNAPP® CS-screw 10x80 with cut-point and reinforced shank

Utilisation: To screw on connector in use of additional wood-based panel layer (detail B, page 9) and connection of cross-laminated timber.



Drilling-jig WALCO® 40 (Aluminium)

Art.-No. K466

Application: Pre-drilling of screw holes.



Installation

- Easy and fast processing with machining center or portable woodworking router.
- Installation with CNC joinery machine possible – all data for the standard CNC joinery machine programmes are included.



1) Pre-drilling with drilling-jig



2) Screw on



3) Screw on counter part

Size of rebate WALCO® 40

Width	Length	Depth
40 mm	continuous	15 mm

Construction manuals, .DXF drawings for WALCO® 40 as well as your personal consultant in your area, please visit:
www.knapp-connectors.com/download

Recommended software partners for machine processing:

cadwork Dietrich's

WALCO® V / WALCO® 40

Selected reference project



Object: Family house on the Rigi (CH); **Architect + Planner:** Schweizer Naturhaus CH-Koblentz, www.natur-haus.ch;
Timber construction: Die Holzwerkstatt Matthias Ebi, Nöggenschwil, www.ebi-holzwerkstatt.de; **Static:** Ingenieurbüro Rotkamm Albruck, www.rotkamm.de; **Method of construction:** Stand-plank wood construction; **Energy Standard:** Low energy according to Swiss standard

Our Customer Service

The KNAPP®-Team provides competent advice and excellent service for your projects.

In Germany and Austria we offer full-coverage service by representatives on-site. You will find the right contact person easily and quickly.

www.knapp-connectors.com/ad

You can reach our internal consultants in Germany and Austria, Monday – Tuesday 8 a.m. to 5 p.m. and on Friday 8 a.m. to noon.

You can reach our global sales manager on phone +43 (0)664 / 88 51 52 87 or E-Mail : globalsales@knapp-connectors.com

www.knapp-connectors.com/contact

Our Planner Service



▶▶▶ Planner service



You can visit our online-shop 24 hours a day. Here you will receive comprehensive information about products and service. After one-time registration you will be able to use the download area.

www.knapp-connectors.com/download

We offer comprehensive planning and structural-engineering calculations for architects, planners and structural engineers. Contact us for your next project! We'd like to offer you statics pre-dimensioning, recommending the right connector from KNAPP®. Benefit from our know-how, many years of experience and rely on our engineers consulting.

www.knapp-connectors.com/planner

KNAPP® offers the right connection for the areas of:

- Timber construction
- Post-beam wood-glass-facade
- Prefab walls
- Timber construction engineering
- Door- and window construction
- Furniture and interior design
- Glued glass elements for timber and metal construction

More information

www.knapp-connectors.com/folder





Contact

+43 (0)664 / 88 51 52 87
globalsales@knapp-connectors.com
+49 (0)89 / 904 75 56 0
info@knapp-connectors.com

knapp-connectors.com/contact



Service

Do you have questions about an optimal solution for your project? Find your sales representative easily on our website:

knapp-connectors.com/ad



order 24h/24 online-store

You want to order around the clock? Our **KNAPP®** online-store is open 24h each day.

knapp-connectors.com/online-store



Download

All brochures, data sheets, technical details are downloadable from our web site.

knapp-connectors.com/download

knapp-connectors.com/contact

knapp-connectors.com/contact

knapp-connectors.com/ad

knapp-connectors.com/ad

knapp-connectors.com/online-store

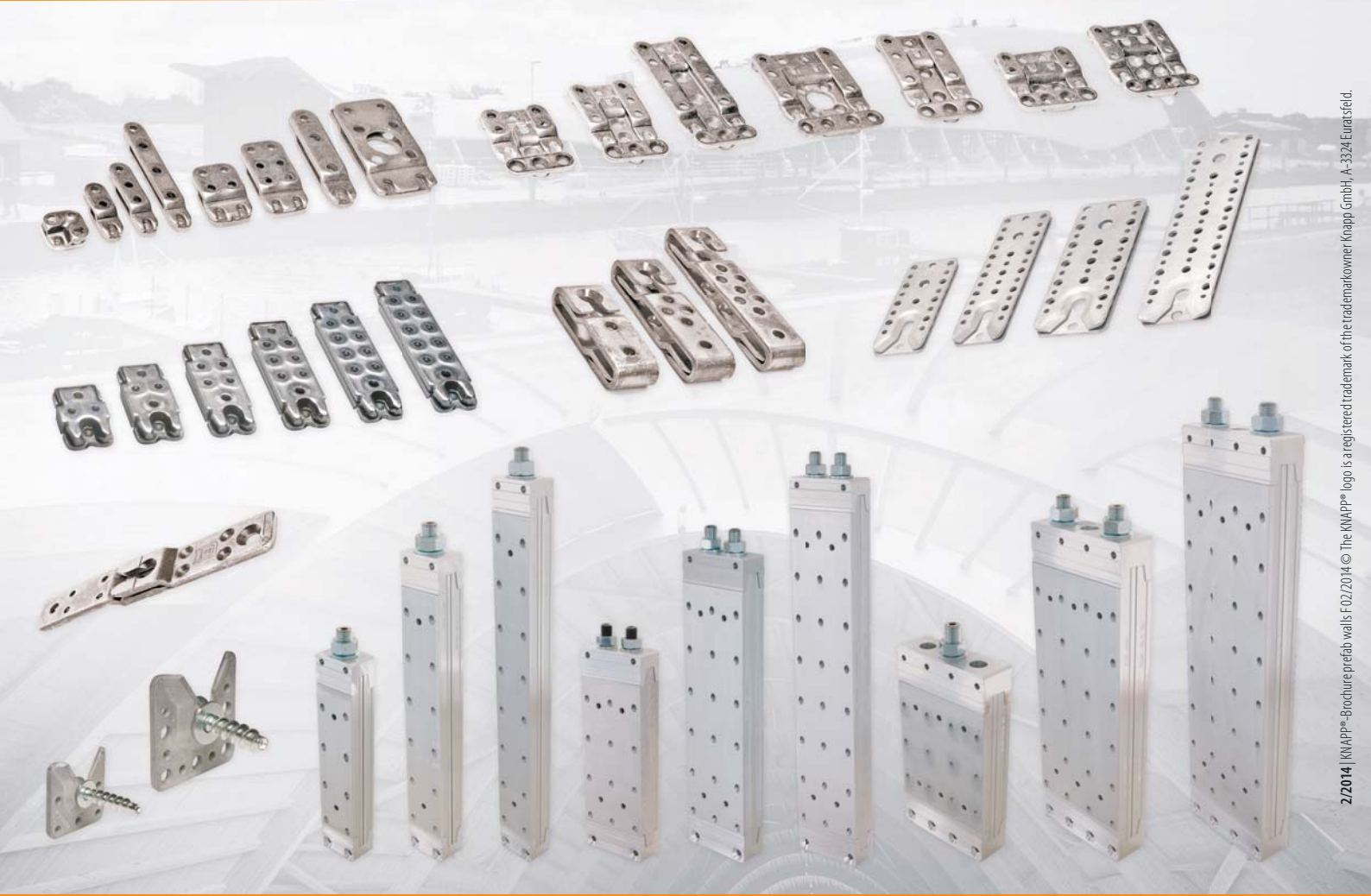
knapp-connectors.com/online-store

knapp-connectors.com/download

knapp-connectors.com/download



Invisible | Auto-serrant | Démontable



The technical contents in this brochure are valid, until a (on our website for download) new brochure is available. This brochure is the exclusive property of Knapp GmbH. Duplication, reproduction or publication, including excerpts, only with the prior written permission of Knapp GmbH. All calculations given in this brochure are made in subject to any printing and typing errors and other mistakes. Technical drawings and calculations, especially those affecting the statics, on customer's own responsibility. Any calculations and drawings in this respect by the company Knapp GmbH are subject to proposals for the orientation and / or liability for the accuracy and therefore not free the customer to wear it even for a proper drawing and calculation by a professional concern. Picture credits are available and can be requested if required. All rights reserved. Copyright © 2014 by Knapp GmbH.



Sales | Knapp GmbH Niederlassung Deutschland | Saturnstraße 2 | D-85609 Aschheim
Tel.: +49 (0)89 / 904 75 56 0 | Fax: +49 (0)89 / 904 75 56 19 | E-Mail: info@knapp-connectors.com

Knapp GmbH | Wassergasse 31 | A-3324 Euratsfeld | Tel.: +43 (0)7474 / 799 10 | Fax: +43 (0)7474 / 799 10 99

KNAPP®
connectors.com